



Project Case Study

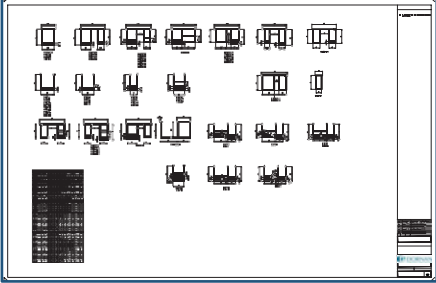
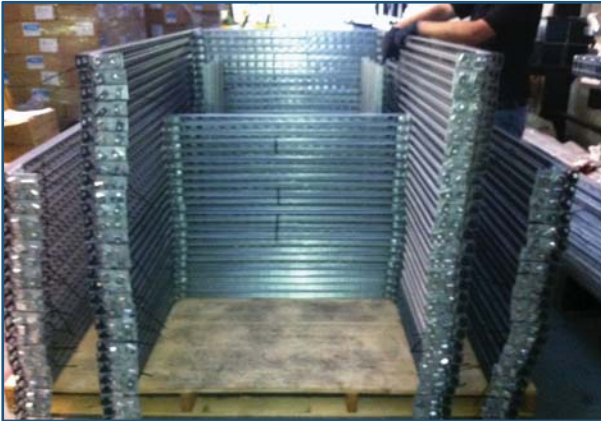
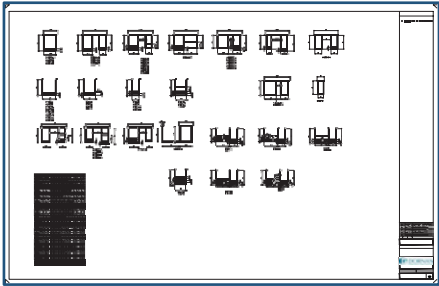
Dornan – Project Fox

Santander
Location: East Midlands, UK
Value: £100 million +
Size: 335,700 sq ft
Programme: 60 weeks

Dornan Engineering are currently on site delivering the services of a new data centre for Santander. The project encompasses the construction of two identical buildings, each with an individual gross floor area of over 161,000 sq ft that will be delivered concurrently. The technically complex fit out of the buildings includes a highly resilient services installation, enabling full maintenance of the 24/7 operating facility. R&M Fixings & Supports Ltd were successful in winning an order to manufacturer off site more than 3000 pre fabricated bracket's using 32000+ of unistrut channel to support the installation of electrical & mechanical services.

QS John Murphy said “We were very impressed with R&M adherence to the project’s aggressive delivery schedule which was required in order to maintain the works installation programme. Also we have received extremely positive feedback from our site supervisors with regard to the construction accuracy of the pre-fabricated brackets and the care taken with regard to the packing and individual labelling of brackets delivered. When considering the magnitude of the order included in the region of 3,200 brackets/frames of various types, which included in excess of 32,000 mts of channel and thousands of fixing accessories, all delivered within a period of three months, with no reported delays or defects, by any standards is very impressive!

We would like to take this opportunity to congratulate and thank all involved, at R&M. Hopefully it will not be long until we work together again on our next project”



26 March 2013.

R & M Fixings & Supports Ltd
Unit 6 Central Trading Estate,
Marine Parade,
Southampton,
Hampshire,
SO14 5JP

For the attention of: Mr S Cargill.

Project Fox - Leicester

Dear Steve,

We would like to take this opportunity to thank you and your team for the excellent service, professional manner and proactive attitude you and your staff have taken in the production and delivery of the substantial prefabricated bracket requirements on this project.

We were very impressed with R&M adherence to the project’s aggressive delivery schedule which was required in order to maintain the works installation program. Also we have received extremely positive feedback from our site supervisors with regard to the construction accuracy of the pre-fabricated brackets and the care taken with regard to the packing and individual labeling of brackets delivered. When considering the magnitude of the order included in the region of 3,200 brackets/frames of various types, which included in excess of 32,000 mts of channel and thousands of fixing accessories, all delivered within a period of three months, with no reported delays or defects, by any standards is very impressive!

We would like to take this opportunity to congratulate and thank all involved, at R&M.

Hopefully it will not be long until we work together again on our next project.

Yours Sincerely

John Murphy
Electrical Quantity Surveyor.